



ROLLER SHUTTER

Solar motorization AUTOSUN 2 HZ

Motor
Solar panel
Battery



SIMU has been a recognised specialist in solar solutions for roller shutters since 2006. All our solar motors are made in France and comply with the Act For Green eco-design requirements.

Autosun is the SIMU solar solution to motorise your roller shutter with a complete system including a motor, a battery, a solar panel and of complete choice of accessories.

Zoom on the solar system

THE SOLAR SOLUTION 100% AUTONOMOUS, WITHOUT WORK

- **Autonomous motorization system** for roof and facade roller shutters, operating with solar energy, a free, clean and renewable energy.
- **No wiring:** AUTOSUN 2 HZ does not need to be connected neither to the electrical network nor to control points (SIMU-Hz radio technology), which means no degradation of interior walls.
- **Optimized outputs:** AUTOSUN 2 HZ has been designed to run in most geographical area.
- **Autonomy of the system:** 45 days without sun, 2 cycles per day.
- **Battery stick in alu cover:** for IP44 protection which makes it more resistant to shocks and liquid penetration.

An innovative solution that adapts to all types of roller shutters whatever your installation (renovation or new, roof or facade shutter).



Renovation



Traditional



Tunnel



CWS



Labeled Act for Green, AUTOSUN is a sustainable and responsible solution, developed according to ecodesign principles.

Motor



Solar panel



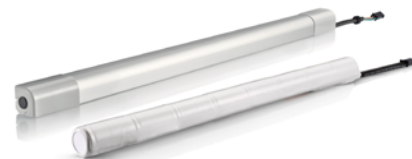
Battery



T3.5 EHZ DC motor:
Torques: 3, 6 or 10 Nm



Solar panel:
with adhesives
or with holes



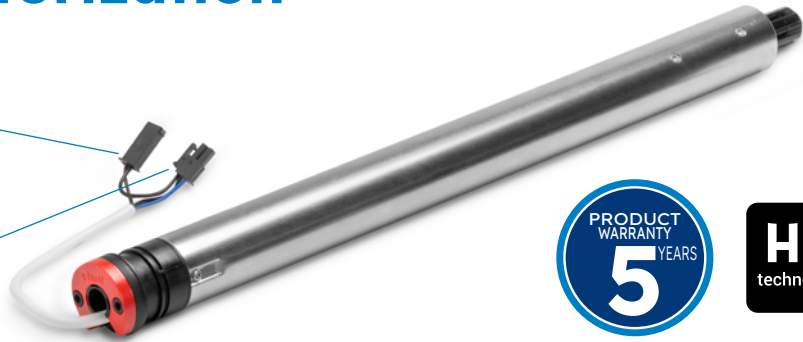
Battery:
Naked battery
or battery stick in alu cover

T3.5 EHZ DC motorization

100% radio

2-point connector
(female) for solar panel

2-point connector
(male) for battery



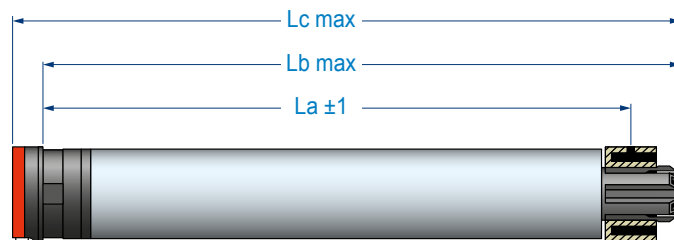
- **HZ Radio technology** (433,42 MHz)
- **4 end-limit settings:** full automatic, manual, semi-automatic UP and semi-automatic DOWN.
- **Adjustment of the end limit with reduced speed** in manual end-limit adjustment to ease the setting.
- **Motor cable:** with 2 connectors 2 points and with mistakeproofing. Reduced size of the connectors to ease the integration inside the side frame.
- **Functions:**
 - Stop on obstacle: the motor will stop during the closing if it meets an obstacle.
 - Frost detection: the motor will stop during the opening if the shutter curtain is stuck in the guide rails by frost or if the bottom lath is locked.
 - Intermediary position: which can be adjusted to the user's need. Push "STOP" button of the transmitter to move the roller shutter to the favorite position.
 - Soft start & Soft stop: the motor will start in reduced speed during the opening and will stop in reduced speed during the opening and closing of the roller shutter.
 - Motor Sleeping and Waking up modes are directly done from the transmitter, no need to have access to the battery. The consumption is thus reduced to the minimum for storage or transportation of the roller shutter and the battery charge is then preserved. The motor will be woken up on site directly from the transmitter as well.
- **Compatible with all SIMU-Hz transmitters and automatic devices, such as TaHoma box.**

References

12 VDC POWER SUPPLY

DESCRIPTION	TORQUE	SPEED	POWER	CURRENT	DIMENSIONS (mm)			WEIGHT	REFERENCES		
					La	Lb	Lc		x 1	x 10	x 100
T3.5 EHZ DC - 3/23	3 Nm	23 rpm	17 W	1.4 A	437	459	474	0.77 kg	2009080	2009083	2009086
T3.5 EHZ DC - 6/18	6 Nm	18 rpm	26 W	2.2 A	437	459	474	0.8 kg	2009081	2009084	2009087
T3.5 EHZ DC - 10/12	10 Nm	12 rpm	30 W	2.4 A	437	459	474	0.8 kg	2009082	2009085	2009088

Technical characteristics



La : Drilling dimensions of tubes.
Lb : Adapted motor size inside the tube.
Lc : Total motor length with adaptor.



POWER SUPPLY	12 Volts
END-LIMIT	Electronic system with operating limited to 3 min.
PROTECTION INDEX	IP 44
POWER CABLE	Long. 0.2 meters, 3x0.75 mm ² wires, white VVF with two connectors.
SIMU-HZ RADIO FREQUENCY	433.42 MHz
SECURE COMMUNICATION	Encrypted control orders + Rolling code with 16 million possible combinations.
RANGE	HZ wall transmitter: ~150m in free field and ~15m through 2 reinforced concrete walls. HZ mobile remote control: ~200m in free field and ~20m through 2 reinforced concrete walls.
MOTOR HEAD THICKNESS	14 mm.
END-LIMIT ADJUSTMENT	Every 60 cycles during 4 cycles.

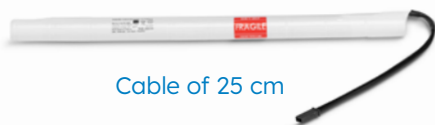
STANDARDS



Battery naked or stick in alu cover



NAKED BATTERY



Cable of 25 cm

BATTERY STICK IN ALU COVER

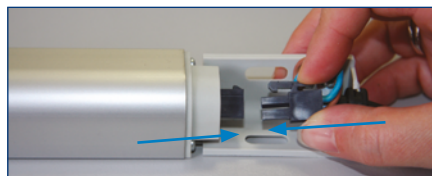


Cable 60 cm

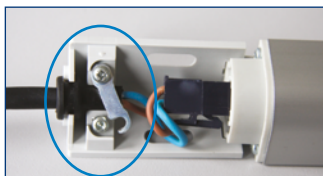
Cable 30 cm

Wide range of batteries to suit at best all installation:

- 1 battery stick in alu cover and its cable of 30cm.
- 1 battery stick in alu cover and its cable of 60cm.
- 1 naked battery, without alu cover and its cable of 25cm. Mounting by pop rivet of the specific brackets and elastics to guarantee the fixing inside the roller shutter box.
- Reduced size of the connector to ease the integration inside the side frame.
- Battery in alu cover: possibility to connect and disconnect the battery cable easily without opening the roller shutter box. Indeed, once the plastic cover of the stick is removed you can unplug/plug the battery cable.



Extension cable with connectors for a quick disconnect



Fixing on the support to hold the cable in place



INSTALLATION	ADVANTAGES	RECOMMENDED BATTERIES
Battery outside the roller shutter box: - between the guide rail and the wall - behind the Roller Shutter box	Easy access to the battery for resetting the system or replacement of the battery	- Battery in alu cover and its cable of 30cm. - Battery in alu cover and its cable of 60cm (Fixing with adhesive or brackets).
Battery inside the roller shutter box	Full integration in factory, nothing to do on site, the roller shutter is ready for use/installation on site.	- Battery in alu cover and its cable of 30cm (Fixing with adhesive or brackets). - Naked battery and its cable of 25cm (Fixing with specific brackets & elastics). Only for RENOVATION roller shutter boxes.

Technical characteristics

BATTERY	Ni-MH
NOMINAL VOLTAGE	12 Volts
CAPACITY	2.2 Ah
AMBIENT TEMPERATURE OF USE	from -20°C to +70°C
PROTECTION INDEX	IP X4
LIFETIME	± 8 years
WEIGHT & DIMENSIONS	Naked battery: 430 x 23.5mm - 520 gr Battery stick in alu cover: 570 x 27 x 27 mm with 0.3 m cable (2-point connector) - 730 gr 570 x 27 x 27 mm with 0.6 m cable (2-point connector) - 760 gr

References

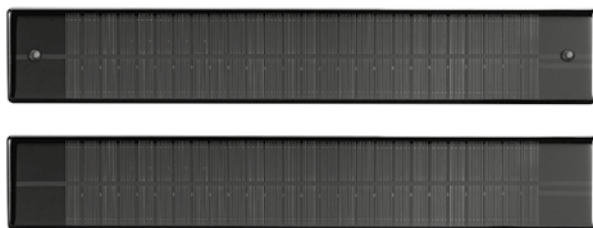
DESCRIPTION	REFERENCES		
	x 1	x 10	x 20
NAKED BATTERY	2020808	-	9020628
BATTERY STICK CABLE 30CM	9020634	9021212	-
BATTERY STICK CABLE 60CM	9020635	9021213	-



DESCRIPTION	REFERENCES
	x 1
SOLAR KIT EXTERIOR C0.3M: Battery with cable of 30cm (9020634) + Solar panel with fixing holes (9019032)	9021214
SOLAR KIT EXTERIOR C0.6M: Battery with cable of 60cm (9020635) + Solar panel with fixing holes (9019032)	9021215

DESCRIPTION	REFERENCES		
	x 1	x 40	x 200
SET OF 20 ADHESIVES BATT STICK (length x width = 550 x 15 mm)	9021216	-	-
SET OF 2 WEDGES BATTERY STICK (dimension: 23 x 19 mm)	9020637	-	-
BRACKET WITH ELASTIC TO FIX NAKED BATTERY	-	9020630	9020629

Solar panel with holes or adhesives



- New solar panel with adhesives to stick it directly on the roller shutter box without making holes.

- Solar panel in resin.
- Aesthetic design.
- 2 possible fixing:
 - Directly on the roller shutter box by pop rivets or with adhesive.
 - On the inclined brackets, on the roller shutter box or on the wall to capture more sun.
- All solar panels have a cable length of 20cm.

Technical characteristics

MATERIAL	Resin panel
TYPE OF PANEL	Photovoltaics monocristalin
PROTECTION INDEX	IP X4
DELIVERED VOLTAGE	195.8 mA maxi.
POWER	3.2 W
TYPE OF CABLE	Cable of 200mm with 2-point connector - type Molex plug (male) and rubber cable-gland for impermeability.
DIMENSION	470 x 60 x 6 mm
WEIGHT	230 g

References

DESCRIPTION	REFERENCES		
	x 1	x 10	x 20
SOLAR PANEL WITH HOLES	9019032	-	9019031
SOLAR PANEL WITH ADHESIVE	9020627	9020626	-

DESCRIPTION	REFERENCES
	x 1
SOLAR KIT EXTERIOR C0.3M: Solar panel with fixing holes (9019032) + battery with cable of 30cm (9020634)	9021214
SOLAR KIT EXTERIOR C0.6M: Solar panel with fixing holes (9019032) + battery with cable of 60cm (9020635)	9021215

DESCRIPTION	REFERENCES
	x 1
SOLAR PANEL BRACKET	9019683
EXTENSION CABLE FOR SOLAR PANEL (5M)	9019722
EXTENSION CABLE FOR SOLAR PANEL (1M)	9028176



Compatibilities

controls & automatic devices

TO PILOT A ROLLER SHUTTER DIRECTLY



HZ radio
remote control
1 channel



HZ radio
wall transmitter
1 channel



Micro-transmitter
(to fit behind the switch,
in the electric box)



TSA+ radio
remote control
4 channels



Radio keypad

TO PROGRAM, AUTOMATE AND CENTRALIZE THE SHUTTERS



HZ radio
remote control
5 channels



Radio
remote control
COLOR MULTI



Radio
remote control
TIMER MULTI



Radio
remote control
TIMER EASY

Compatibility

100% CONNECTED OFFER



Make your life easy with TaHoma® switch!

With TaHoma®, you can control and connect your home equipment to all SIMU solutions (gate door opener, garage doors...) and enrich your customer connected experience!

...WITH TAHOMA® SWITCH



By connecting your roller shutter, enrich your home experience. TaHoma® switch centralize and connect all your roller shutters in the house.

...THE HZ TRANSMITTER RANGE

1 or 5 channel transmitter **without** feedback.





References for installers

References

The kit is made up of one motor, one solar panel and battery in alu cover (cable 60cm), and is delivered in a single packaging, to meet at best installer needs or for one renovation.

DESCRIPTION	REFERENCES x 1
T3.5 EHZ 3/23 12V + SOL KIT EXT: T3.5 EHz DC 3/23 motor + battery with cable of 60 cm + solar panel	2009398
T3.5 EHZ 6/18 12V + SOL KIT EXT: T3.5 EHz DC 6/18 motor + battery with cable of 60 cm + solar panel	2009399
T3.5 EHZ 10/12 12V + SOL KIT EXT: T3.5 EHz DC 10/12 motor + battery with cable of 60 cm + solar panel	2009400



Accessory Battery charger

NEW



A single charger for all NimH batteries for roller shutters and screen solar offers.



Delivered with 2 cable extension to guarantee the compatibility with all solar offers.



International outputs to guarantee compatibility in different countries.

Type A

Type G

Type I

Technical characteristics

CLASS INSULATION	II
PROTECTION INDEX	IP30
MINIMUM VOLTAGE	8.4 V
MAXIMUM VOLTAGE	16.8 V
CABLE	1.80 m
DIMENSIONS	L 109 x l 49 x H 29 mm

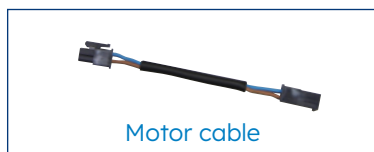
References

DESCRIPTION	REFERENCES x 1
NIMH BATTERY CHARGER	9028028

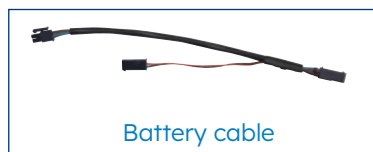
DESCRIPTION	REFERENCES x 1
ADAPT TYPE A CHARGER/1	9028029
ADAPT TYPE G CHARGER/1	9028030
ADAPT TYPE I CHARGER/1	9028031



After sales references



Motor cable



Battery cable

DESCRIPTION	REFERENCES x 1
MOTOR CABLE: enable to keep the battery and the solar panel AUTOSUN 1 with one motor AUTOSUN 2	9020481
BATTERY CABLE: enable to keep the motor and the solar panel AUTOSUN 1 with one battery AUTOSUN 2	9020639



www.autosun.eu



Zone industrielle les Giranaux
70100 Arc-lès-Gray - France
T. +33 (0)3 84 64 75 00
@ service@simu.com



www.simu.com