

NEW

simu-BHz[®]
technology

SIMU-BHz RADIO ELECTRONIC MOTOR

T5EBHz - Ø50

simu-BHz[®]
technology

MOTOR WITH BUILT-IN BIDIRECTIONAL RADIO SIMU-BHz

...a real time follow-up of your installation directly on smartphone with LiveIn[®].
The motor gives its position on your smartphone.

ELECTRONIC END-LIMIT SYSTEM

...4 possible setting modes: automatic mode, down semi-automatic mode, up semi-automatic mode, manual mode.

STOP ON OBSTACLE FUNCTION

...the motor stops during the closing in the case of an obstacle.

FROST DETECTION FUNCTION

...the motor stops during the opening if the shutter curtain is stuck in the guide rails by frost or if the bottom lath is locked.

INTERMEDIATE POSITION FUNCTION

...it is possible to record a user's favorite position.

SIMPLE PROGRAMMING

...SIMU-Hz/SIMU-BHz continuity: your installation and programming habits remain the same as those of SIMU-Hz technology.

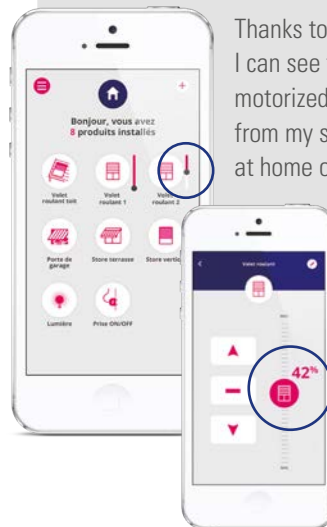
WHAT IS SIMU-BHz?

simu-BHz[®]
technology

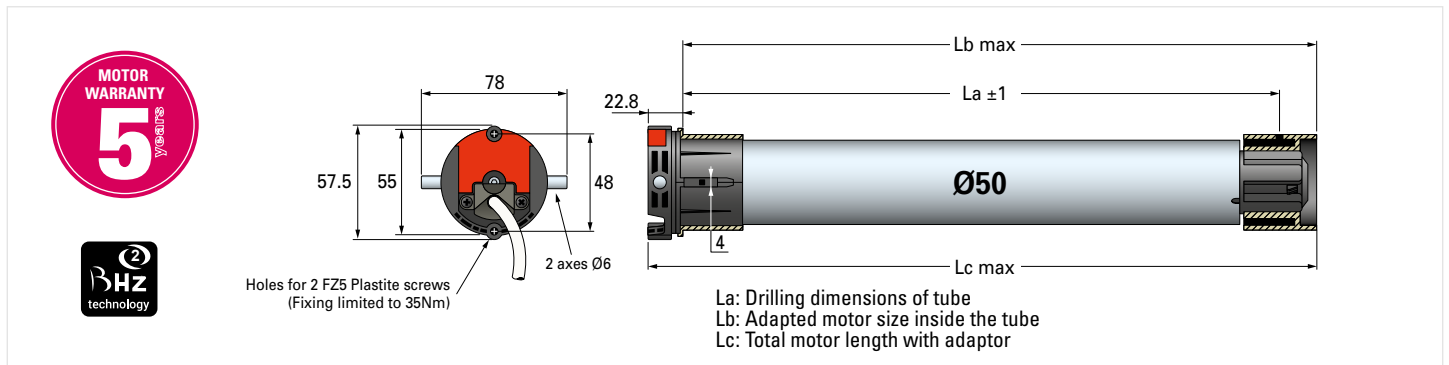
This is the new radio range with information feedback developed by SIMU.

Thanks to the application LiveIn[®], I can see the position of my motorized shutters BHz, from my smartphone, at home or elsewhere.

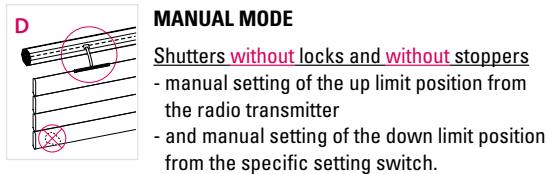
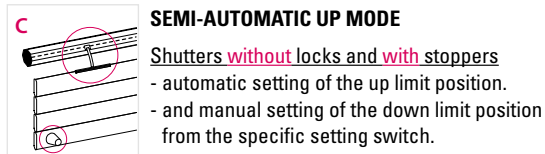
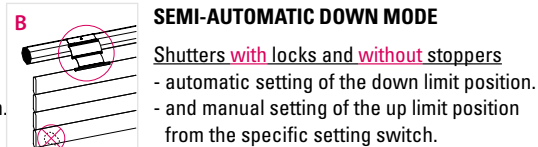
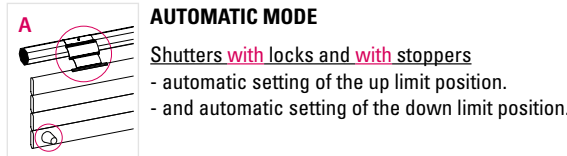
I can also choose to adjust the opening of my shutter to the desired position!



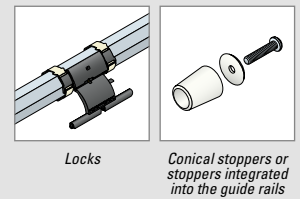
DIMENSIONS



4 POSSIBLE SETTING MODES



RECOMMENDED EQUIPMENT FOR THE AUTOMATIC SETTING MODE



MOTOR RANGE

POWER SUPPLY 230V - 50 Hz

DESCRIPTION	TORQUE	SPEED	POWER	CURRENT	La	Lb	Lc	WEIGHT	REFERENCES		
									x100	x10	x1
T5EBHZ	8 Nm	17 rpm	100 W	0.45 A	585mm	598mm	621mm	1.96 kgs	2009355	2009203	2009210
T5EBHZ	10 Nm	17 rpm	120 W	0.5 A	585mm	598mm	621mm	2.01 kgs	2009356	2009204	2009211
T5EBHZ	15 Nm	17 rpm	140 W	0.65 A	585mm	598mm	621mm	2.27 kgs	2009357	2009205	2009212
T5EBHZ	20 Nm	17 rpm	160 W	0.75 A	659mm	672mm	695mm	2.39 kgs	-	2009206	2009213
T5EBHZ	25 Nm	17 rpm	170 W	0.8 A	659mm	672mm	695mm	2.48 kgs	-	2009207	2009214
T5EBHZ	35 Nm	17 rpm	240 W	1.1 A	659mm	672mm	695mm	2.67 kgs	-	2009208	2009215
T5EBHZ	50 Nm	12 rpm	240 W	1.1 A	659mm	672mm	695mm	2.7 kgs	-	2009209	2009216

TECHNICAL CHARACTERISTICS

- POWER SUPPLY** 230 Volt - 50 Hz
- THERMAL CUT-OUT** 4 minutes
- END-LIMIT** Electronic system with operating limited to 3 minutes.
- PROTECTION INDEX** IP 44
- POWER CABLE** 2.5 meters (3x0,75 mm² wires , white H05 VVF) pluggable
- RADIO FREQUENCY** Tri-band radio frequency 868-870 MHz with possibility to edit 8 times the order.
- REMOTE CONTROL RANGE** **Wall version:** 150 meters in open field and 15 meters trough 2 reinforced concrete walls
Mobile version: 200 meters in open field and 20 meters trough 2 reinforced concrete walls
- BASE DIAMETER OF THE CROWN** for Ø50 x 1.5mm round tube
- MOTOR HEAD THICKNESS** 22.8mm
- 4 CYCLES PER DAY** Non consecutive
- INSULATION CLASS** Class I motor
- COMPLIANCE** European standards (EN) – IEC standards (international standards)



— COMPATIBILITY WITH —

...the **Box LiveIn²**
The new smartphone control solution
with feedback.

And the application **LiveIn²**



www.livein.simu.com

...the new **BHZ transmitter range**
1 or 5 channel transmitter
without feedback.

