



## T5 AUTO+ SHORT MOTOR

SHORT WIRED ELECTRONIC, Ø 50 MM



ROLLER SHUTTER



### AUTOMATIC SETTING OF THE UP AND DOWN END-LIMIT

... the roller shutter must be equipped with up and down stoppers.

### AN AUTO-ADAPTIVE DISTRESSING FUNCTION AT END-LIMITS (UP AND DOWN)

...to suit all end-products. **PATENTED SYSTEM**

### MOTOR SUITABLE FOR SHORT WIDTH ROLLER SHUTTER

...thanks to its length of only 387mm, including the adaptor.

### STOP ON OBSTACLE FUNCTION

... the motor stops when closing in the case of an obstacle.

### FROST DETECTION FUNCTION

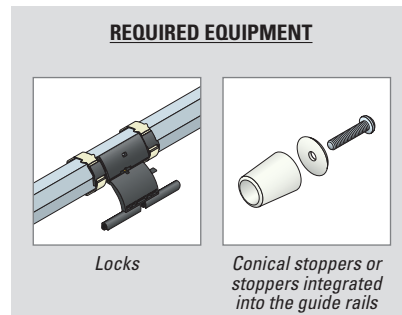
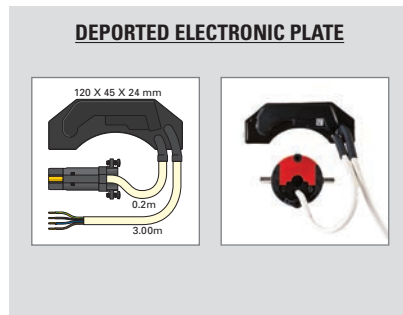
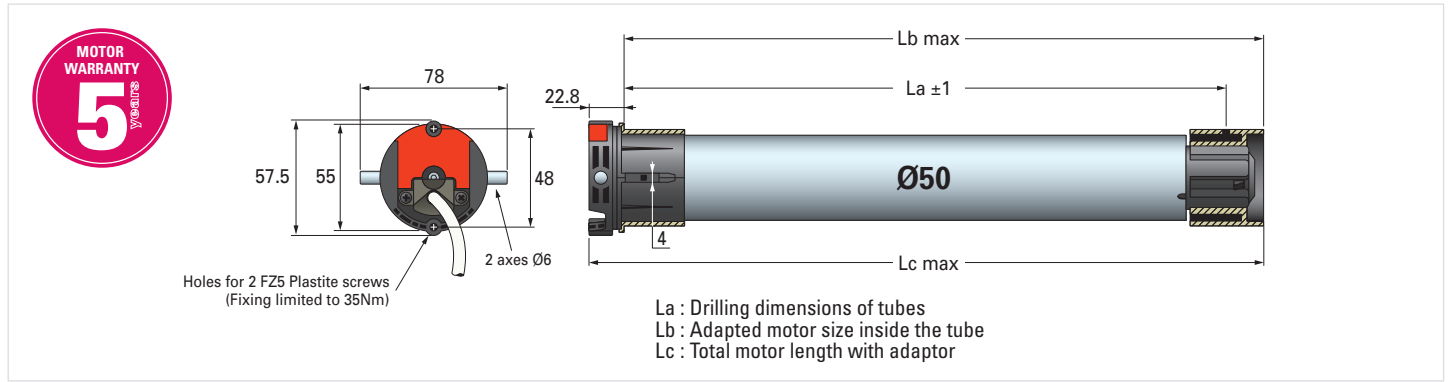
... the motor stops when opening if the shutter curtain is stuck in the guide rails by frost or if the bottom lath is locked

### PERMANENT READJUSTMENT OF END-LIMITS

... thanks to the self-learning and constant revising of the up and down end-limit positions. It adapts thus to the variation in length of the shutter curtain over time.



## T5 AUTO+SHORT DIMENSIONS



## T5 AUTO+SHORT MOTOR RANGE

POWER SUPPLY 230V - 50 Hz CABLE 3 METERS

| DESCRIPTION   | TORQUE | SPEED      | POWER | CURRENT | La     | Lb     | Lc     | WEIGHT  | REFERENCES |         |
|---------------|--------|------------|-------|---------|--------|--------|--------|---------|------------|---------|
|               |        |            |       |         |        |        |        |         | X10        | X1      |
| T5 AUTO+SHORT | 6 Nm   | 17 tr/min. | 90 W  | 0,4 A   | 351 mm | 364 mm | 387 mm | 1,63 kg | 2006743    | 2006742 |

## T5 AUTO+SHORT TECHNICAL CHARACTERISTICS

- POWER SUPPLY** 230 Volts - 50 Hz
- THERMAL CUT-OUT** 4 minutes
- END-LIMIT** Electronic system integrated in the deported plate with operating limited to 3 min. The readjustment is automatic and permanent.
- PROTECTION INDEX** IP 44
- POWER CABLE** 3 meters (4x0.75 mm<sup>2</sup> wires, white H05 VVF)
- BASE DIAMETER OF THE CROWN** for Ø50 x 1.5 mm round tube
- MOTOR HEAD THICKNESS** 22.8 mm
- 4 CYCLES PER DAY** non consecutive
- INSULATION CLASS** Class I motor
- COMPLIANCE** European standards (EN) + IEC standards (international standards)
- CERTIFICATIONS & STANDARDS**
  - NF
  - CE
  - DVE

Visit [www.simu.com](http://www.simu.com)



- PROshop
- E-catalogue
- Manuals
- Video
- Recommendations
- FAQ

Subscribe to our YouTube channel YouTube

